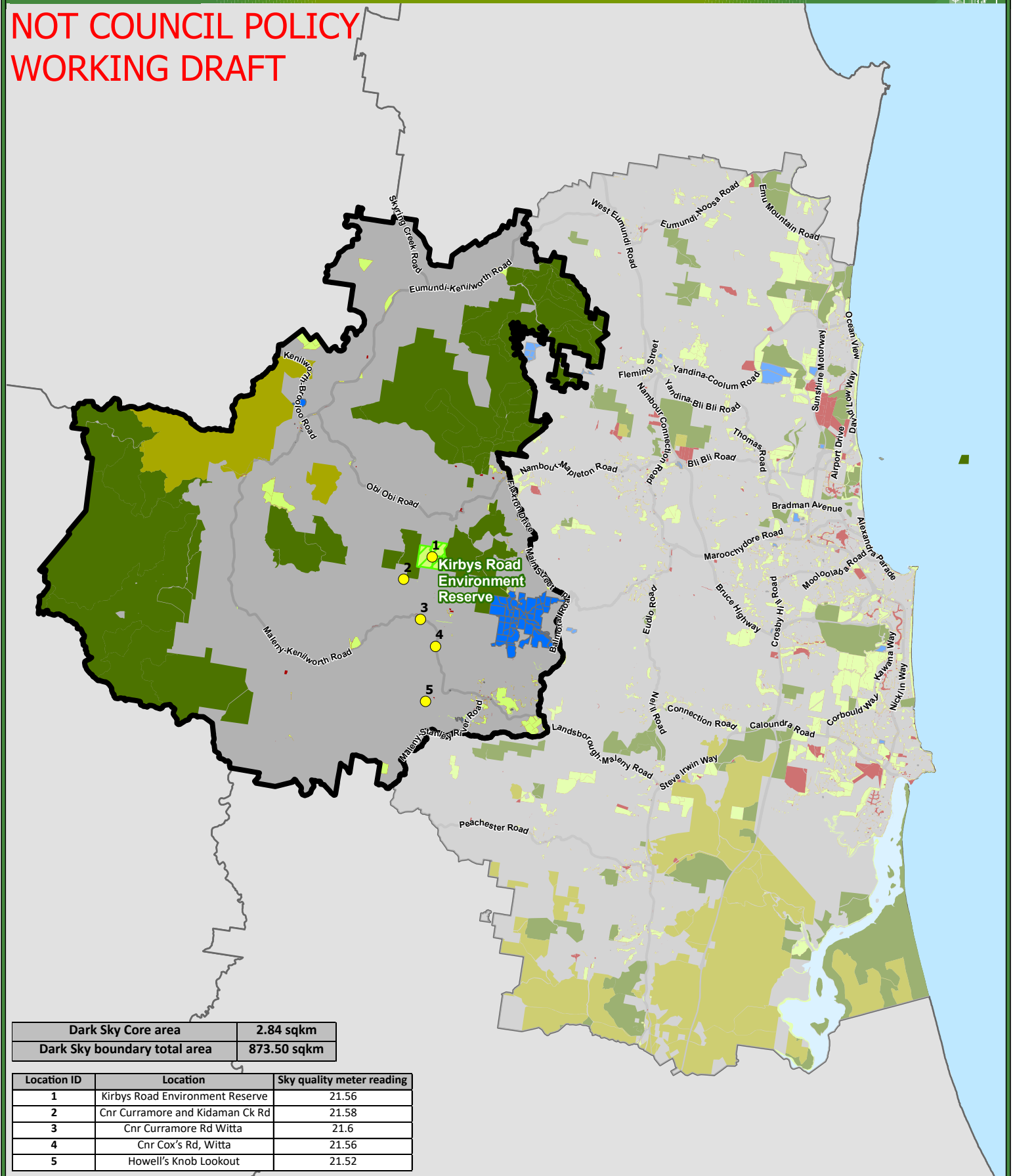




**NOT COUNCIL POLICY  
WORKING DRAFT**



<b>Dark Sky Core area</b>	<b>2.84 sqkm</b>
<b>Dark Sky boundary total area</b>	<b>873.50 sqkm</b>

Location ID	Location	Sky quality meter reading
1	Kirbys Road Environment Reserve	21.56
2	Cnr Curramore and Kidaman Ck Rd	21.58
3	Cnr Curramore Rd Witta	21.6
4	Cnr Cox's Rd, Witta	21.56
5	Howell's Knob Lookout	21.52

**Legend**

- Major Roads
- Dark Sky Reserve**
  - Core
  - Proposed Dark Sky Boundary
  - Sky Quality meter reading locations
- Government Land**
  - National Parks, Conservation Parks
  - State Forest
  - Council Controlled Open Space
  - Other Council Controlled Land
  - Other Government Land (Unitywater and QLD Bulk Water Supply Authority)

Environment & Sustainability Policy  
 [w] <http://maps.sunshinecoast.qld.gov.au>  
 [e] [els@sunshinecoast.qld.gov.au](mailto:els@sunshinecoast.qld.gov.au)

A4 1:330,000  
 0 1 2 3 4 5 km

**Disclaimer**  
 While every care is taken to ensure the accuracy of this product, neither the Sunshine Coast Council nor the State of Queensland makes any representations or warranties about its accuracy, reliability, completeness or suitability for any particular purpose and disclaims all responsibility and all liability (including without limitation, liability in negligence) for all expenses, losses, damages (including indirect or consequential damage) and costs that may occur as a result of the product being inaccurate or incomplete in any way or for any reason.  
 Crown & Council Copyright Reserved.  
 Geocentric Datum of Australia 2020

Contact: aw039  
 Last Printed: Tuesday, 24 October 2023