

# **Additional Information**

## **Item 8.1, 8.9 & 8.11 Ordinary Meeting**

**Thursday, 21 September 2023**



---

## TABLE OF CONTENTS

---

ITEM	SUBJECT	PAGE NO
8.1	<b>COASTAL HEALTH REPORT FOR THE SUNSHINE COAST</b>	
	ATTACHMENT 1 ADDITIONAL INFORMATION.....	5
8.9	<b>DISPOSAL (LEASES) TO QUEENSLAND FIRE AND EMERGENCY SERVICES OVER VARIOUS RURAL FIRE BRIGADE SITES</b>	
	ATTACHMENT 2 ADDITIONAL INFORMATION.....	7
8.11	<b>DISPOSAL (EASEMENT) OF PART OF COUNCIL FREEHOLD LAND WITHIN MULTIPLE PROPERTIES MERIDAN PLAINS TO AURA</b>	
	ATTACHMENT 2 ADDITIONAL INFORMATION.....	21



## Related Report / Additional Information Request

<b>Meeting:</b>	<b>Ordinary Meeting</b>	<b>Date:</b>	<b>21 September 2023</b>
<b>Requesting Councillor:</b>	<b>Councillor O'Pray</b>		
<b>Item:</b>	<b>Coastal Health Report for the Sunshine Coast</b>		
<b>Circulation</b>	<b>Tuesday 19 September 2023</b>		
<b>Officer (title):</b>	<b>Coordinator Biodiversity &amp; Waterways</b>	<b>Approving GE (title):</b>	<b>Group Executive Liveability and Natural Assets</b>

In response to a question raised by Councillor O'Pray, please note the following additional information for your consideration.

### Question:

How does the Coastal Health Report results for water quality in the lower estuaries compare to the annual Healthy Land and Water Report Card?

### Response:

- The Coastal Health Report (CHR) rates the water quality in our lower estuaries (Maroochy, Mooloolah and Pumicestone) as 'excellent', which is consistent with the annual Healthy Land & Water (HLW).
- In the annual report cards for 20/21 (similar data collection period for the Coastal Health Report) the health of the catchments associated with these lower estuaries were 'fair' (or a C+ in their report card) for the Mooloolah and Maroochy catchments and very good (or a B+ in their report card) for the Pumicestone catchment.
- The Healthy Land & Water report card results incorporate data from both the upper catchment as well as the lower estuaries.
- A closer look at the components of the Healthy Land & Water results for 20/21 show that they also recorded an 'excellent' grade in all three lower estuaries, however the overall catchment health score was dragged down by much poorer upper catchment results.
- The physical/chemical parameters monitored by both Healthy Land & Water and in the Coastal Health Report (nitrogen, phosphorus, dissolved oxygen, chlorophyll-a and turbidity) are common water quality indicators for monitoring background or the underlying health of waterways.
- There are other contaminants that can influence waterway health, however these will vary depending on the local impacts and are better investigated by site-specific and tailored monitoring programs as required.



## Related Report / Additional Information Request

Meeting:	Ordinary Meeting	Date:	21 September 2023
Requesting Councillor:	Councillor W Johnston		
Item:	Item 8.9: Disposal (Leases) to Queensland Fire and Emergency Services over various Rural Fire Brigade sites		
Circulation	Tuesday 19 September 2023		
Officer (title):	Manager Leasing and Land Management	Approving GE (title):	Group Executive Business Performance

In response to a question raised by Councillor W Johnston, please note the following additional information for your consideration.

**Question:** Can further clarification be provided in relation to the area being leased to the Eudlo Rural Fire Brigade?

**Response:** A revised attachment has been provided outlining the areas to be leased to Queensland Fire and Emergency Services for Rural Fire Brigade purposes in red. This has been completed to provide clarity for each of the 12 sites included in the report titled '*Disposal (Leases) to Queensland Fire and Emergency Services over various Rural Fire Brigade sites.*'



### Palmwoods Rural Fire Brigade - Lot 119 CG6375

 **Sunshine Coast**  
COUNCIL  
Sunshine Coast Council  
Locked Bag 72  
Sunshine Coast Mail Centre QLD 4560



1:564  
0 0.005 0.01 0.02 km  
Printed on A4 paper

8/16/2023, 2:40:09 PM Author : Web AppBuilder for ArcGIS

**Disclaimer**  
While every care is taken to ensure the accuracy of this product, neither the Sunshine Coast Regional Council nor the State of Queensland makes any representations or warranties about its accuracy, reliability, completeness or suitability for any particular purpose and disclaims all responsibility and all liability (including without limitation, liability in negligence) for all expenses, losses, damages (including indirect or consequential damage) and costs that may occur as a result of the product being inaccurate or incomplete in any way or for any reason.

© Crown & Council Copyright Reserved.



Glasshouse Mountains Rural Fire Brigade - Lot 5 G5933

  
Sunshine Coast Council  
Locked Bag 72  
Sunshine Coast Mail Centre QLD 4560



1:564  
0 0.005 0.01 0.02 km  
Printed on A4 paper

8/16/2023, 12:39:31 PM Author : Web AppBuilder for ArcGIS

**Disclaimer**  
While every care is taken to ensure the accuracy of this product, neither the Sunshine Coast Regional Council nor the State of Queensland makes any representations or warranties about its accuracy, reliability, completeness or suitability for any particular purpose and disclaims all responsibility and all liability (including without limitation, liability in negligence) for all expenses, losses, damages (including indirect or consequential damage) and costs that may occur as a result of the product being inaccurate or incomplete in any way or for any reason.

© Crown & Council Copyright Reserved.



Kureelpa Rural Fire Brigade - Lot 116 RP867886

 **Sunshine Coast**  
COUNCIL  
Sunshine Coast Council  
Locked Bag 72  
Sunshine Coast Mail Centre QLD 4560



1:564  
0 0.005 0.01 0.02 km  
Printed on A4 paper

8/16/2023, 2:33:47 PM

Author : Web AppBuilder for ArcGIS

**Disclaimer**  
While every care is taken to ensure the accuracy of this product, neither the Sunshine Coast Regional Council nor the State of Queensland makes any representations or warranties about its accuracy, reliability, completeness or suitability for any particular purpose and disclaims all responsibility and all liability (including without limitation, liability in negligence) for all expenses, losses, damages (including indirect or consequential damage) and costs that may occur as a result of the product being inaccurate or incomplete in any way or for any reason.

© Crown & Council Copyright Reserved.



Landsborough Rural Fire Brigade - Lot 15 SP175827

  
Sunshine Coast Council  
Locked Bag 72  
Sunshine Coast Mail Centre QLD 4560



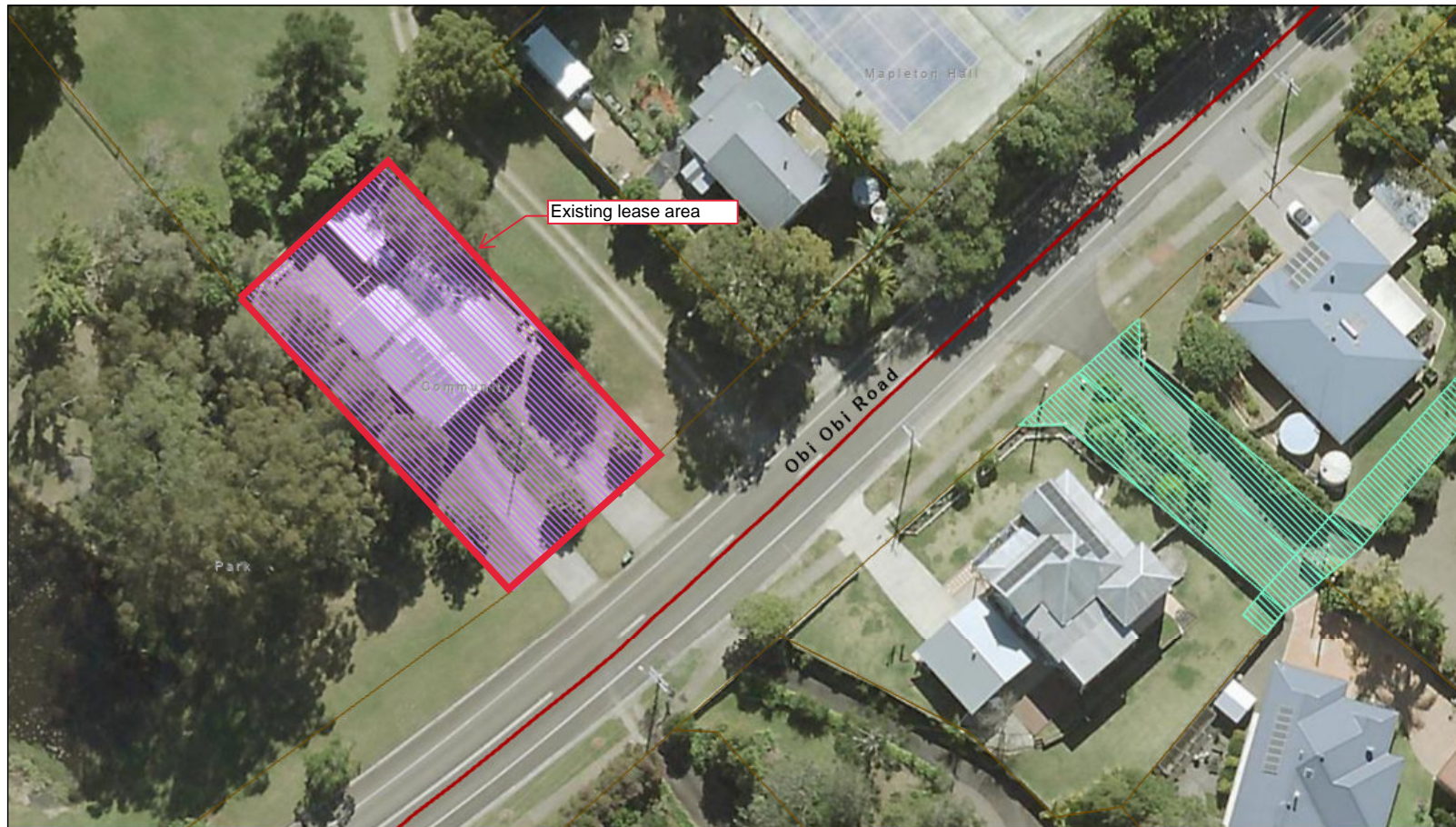
1:564  
0 0.005 0.01 0.02 km  
Printed on A4 paper

8/16/2023, 2:51:56 PM

Author : Web AppBuilder for ArcGIS

**Disclaimer**  
While every care is taken to ensure the accuracy of this product, neither the Sunshine Coast Regional Council nor the State of Queensland makes any representations or warranties about its accuracy, reliability, completeness or suitability for any particular purpose and disclaims all responsibility and all liability (including without limitation, liability in negligence) for all expenses, losses, damages (including indirect or consequential damage) and costs that may occur as a result of the product being inaccurate or incomplete in any way or for any reason.

© Crown & Council Copyright Reserved.



Mapleton Rural Fire Brigade - Lot 7 RP199491





### Yandina/North Arm Rural Fire Brigade - Lot 3 RP122959

  
Sunshine Coast Council  
Locked Bag 72  
Sunshine Coast Mail Centre QLD 4560




1:2,257  
0 0.0225 0.045 0.09 km  
Printed on A4 paper

8/16/2023, 3:01:30 PM Author : Web AppBuilder for ArcGIS


**Disclaimer**  
While every care is taken to ensure the accuracy of this product, neither the Sunshine Coast Regional Council nor the State of Queensland makes any representations or warranties about its accuracy, reliability, completeness or suitability for any particular purpose and disclaims all responsibility and all liability (including without limitation, liability in negligence) for all expenses, losses, damages (including indirect or consequential damage) and costs that may occur as a result of the product being inaccurate or incomplete in any way or for any reason.

© Crown & Council Copyright Reserved.



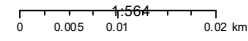


Sunshine Coast Council  
Locked Bag 72  
Sunshine Coast Mail Centre QLD 4560



N

Valdora Rural Fire Brigade - Lot 5 RP901240



1:564  
0 0.005 0.01 0.02 km  
Printed on A4 paper

Disclaimer  
While every care is taken to ensure the accuracy of this product, neither the Sunshine Coast Regional Council nor the State of Queensland makes any representations or warranties about its accuracy, reliability, completeness or suitability for any particular purpose and disclaims all responsibility and all liability (including without limitation, liability in negligence) for all expenses, losses, damages (including indirect or consequential damage) and costs that may occur as a result of the product being inaccurate or incomplete in any way or for any reason.

8/16/2023, 3:09:07 PM Author : Web AppBuilder for ArcGIS © Crown & Council Copyright Reserved.



### Eumundi Rural Fire Brigade - Lot 10 RP867922

 **Sunshine Coast**  
COUNCIL  
Sunshine Coast Council  
Locked Bag 72  
Sunshine Coast Mail Centre QLD 4560



1:564  
0 0.005 0.01 0.02 km  
Printed on A4 paper

8/16/2023, 3:14:20 PM Author : Web AppBuilder for ArcGIS

**Disclaimer**  
While every care is taken to ensure the accuracy of this product, neither the Sunshine Coast Regional Council nor the State of Queensland makes any representations or warranties about its accuracy, reliability, completeness or suitability for any particular purpose and disclaims all responsibility and all liability (including without limitation, liability in negligence) for all expenses, losses, damages (including indirect or consequential damage) and costs that may occur as a result of the product being inaccurate or incomplete in any way or for any reason.

© Crown & Council Copyright Reserved.



### Beerwah Rural Fire Brigade - Lot 100 SP235756

 **Sunshine Coast**  
COUNCIL  
Sunshine Coast Council  
Locked Bag 72  
Sunshine Coast Mail Centre QLD 4560



1:2,257  
0 0.0225 0.045 0.09 km  
Printed on A4 paper

8/16/2023, 3:22:41 PM Author : Web AppBuilder for ArcGIS

**Disclaimer**  
While every care is taken to ensure the accuracy of this product, neither the Sunshine Coast Regional Council nor the State of Queensland makes any representations or warranties about its accuracy, reliability, completeness or suitability for any particular purpose and disclaims all responsibility and all liability (including without limitation, liability in negligence) for all expenses, losses, damages (including indirect or consequential damage) and costs that may occur as a result of the product being inaccurate or incomplete in any way or for any reason.

© Crown & Council Copyright Reserved.



### Conondale Rural Fire Brigade - Lot 3 RP15044

 **Sunshine Coast**  
COUNCIL  
Sunshine Coast Council  
Locked Bag 72  
Sunshine Coast Mail Centre QLD 4560



0 0.01 0.02 0.04 km  
1:1,128  
Printed on A4 paper

8/16/2023, 3:26:19 PM

Author : Web AppBuilder for ArcGIS

**Disclaimer**  
While every care is taken to ensure the accuracy of this product, neither the Sunshine Coast Regional Council nor the State of Queensland makes any representations or warranties about its accuracy, reliability, completeness or suitability for any particular purpose and disclaims all responsibility and all liability (including without limitation, liability in negligence) for all expenses, losses, damages (including indirect or consequential damage) and costs that may occur as a result of the product being inaccurate or incomplete in any way or for any reason.

© Crown & Council Copyright Reserved.



### Eudlo Rural Fire Brigade - Lot 50 CP848476



Sunshine Coast Council  
Locked Bag 72  
Sunshine Coast Mail Centre QLD 4560



1:564  
0 0.005 0.01 0.02 km

Printed on A4 paper

8/17/2023, 12:39:48 PM

Author : Web AppBuilder for ArcGIS

#### Disclaimer

While every care is taken to ensure the accuracy of this product, neither the Sunshine Coast Regional Council nor the State of Queensland makes any representations or warranties about its accuracy, reliability, completeness or suitability for any particular purpose and disclaims all responsibility and all liability (including without limitation, liability in negligence) for all expenses, losses, damages (including indirect or consequential damage) and costs that may occur as a result of the product being inaccurate or incomplete in any way or for any reason.

© Crown & Council Copyright Reserved.



### Verrierdale Rural Fire Brigade - Lot 4 RP45471

  
Sunshine Coast Council  
Locked Bag 72  
Sunshine Coast Mail Centre QLD 4560



0 0.01 0.02 0.04 km  
1:1,128  
Printed on A4 paper

8/16/2023, 3:44:45 PM

Author : Web AppBuilder for ArcGIS

**Disclaimer**  
While every care is taken to ensure the accuracy of this product, neither the Sunshine Coast Regional Council nor the State of Queensland makes any representations or warranties about its accuracy, reliability, completeness or suitability for any particular purpose and disclaims all responsibility and all liability (including without limitation, liability in negligence) for all expenses, losses, damages (including indirect or consequential damage) and costs that may occur as a result of the product being inaccurate or incomplete in any way or for any reason.

© Crown & Council Copyright Reserved.



## Related Report / Additional Information Request

Meeting:	Ordinary Meeting	Date:	21 September 2023
Requesting Councillor:	Councillor Suarez		
Item:	Item 8.11: Disposal (Easement) multiple properties Meridan Plains to Aura		
Circulation	Tuesday 19 September 2023		
Officer (title):	Manager Leasing and Land Management	Approving GE (title):	Group Executive Business Performance

In response to a question raised by Councillor Suarez, please note the following additional information for your consideration.

**Question:** When Energex were consulted on this report were any discussions held regarding undergrounding power?

**Response:** Energex undertook extensive consultation with Council, other government departments and the public as part of the Community Infrastructure Designation consideration process. Whilst undergrounding of the network was considered at this time, it was determined that undergrounding of such an extensive network to support this growth corridor would be cost prohibitive in relation to both the installation and it would impact the ability for Energex to maintain/repair such an important part of the network

On this basis, the State Government approved the design and plans as part of the Community Infrastructure Designation for the installation of an above ground network.

It should be noted, that the valuer will take into consideration that the network will be above ground and will factor this into the value of the consideration payable by Energex.